



Application: 1971-1975 C3 Corvette

Part Includes

1 - Rear Carpet Set

## Convertible 80-20 Loop Rear Carpet Set



### Tools Needed



Search: **Carpet**

[www.mamotorworks.com](http://www.mamotorworks.com)

### C3 Corvette Carpet Content and Interior Description

**C3 Corvette Standard Interior, 1968-1976:** For 1968 Corvettes with standard interiors, the vinyl seat used an insert fabric called Basketweave. For Corvettes from 1969-1976 the standard interior consisted of Plain Vinyl seat covers with Comfortweave Vinyl inserts, plain door panels and 80/20 loop carpeting.

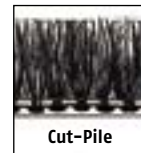
**C3 Corvette Deluxe Interior (Custom Interior Trim), 1970-1976 and 1977-1982:** This option for Corvettes first appeared in 1970 and was available thru 1976. A Deluxe Custom Interior consisted of Leather Seat Covers and plain leather seat inserts, plush (cut pile) carpeting and special trim door panels with carpet trim at the bottom and a wood grained vinyl insert in the door panel. From 1977-1982, all Corvette came standard with Plush Carpet and Leather Seat Covers.

**80/20 Loop Carpeting:** The yarn is 100% Raylon. It has a pile height of 8/32" and is 20 ounces per square yard. The primary backing is Colbond with a secondary backing of latex/poly which allows the carpet to be molded.

**Plush, Cut Pile Carpeting:** The yarn is 100% BCF nylon. It has a pile height of 3/8" and is 13.5 ounces per square yard. The primary backing is called Lutrador and has a secondary backing of latex/poly which allows the carpet to be molded.



80/20 Loop



Cut-Pile

### DIRECTIONS FOR SAFE AND PROPER APPLICATION

**NOTE:** For Front only installation Steps 7-10 can be skipped, for Rear only installation Step 11 can be skipped. (All of the installation steps were intentionally left in for reference and informational purposes.)

**STEP 1.** Remove seats: Slide seat forward to remove rear seat bolts and back to remove front bolts. Remove all plastic trim pieces that cover the edges of the carpet. Use caution not to crack plastic pieces, especially the storage door trim frame, while removing. Storage door trim rings are very fragile and often break. A complete new storage door assembly can be purchased to match your interior. Individual rear storage compartment pieces are available and will come black/unpainted. You can paint to match using our Color Coat paint. (**NOTE:** Our interior screw kit, part **601-906**, may be necessary to replace stripped or missing screws)

**STEP 2.** It is helpful to take pictures of the original carpet after you remove the seats. The photos will aid in installing the new carpet.



Mamotorworks



@CorvettePassion



MidAmericaMotorworks



CorvettePassion

2900 North Third Street, Effingham, IL 62401

800.500.1500 • Worldwide: 217.540.4200 • FAX: 217.540.4800

[www.mamotorworks.com](http://www.mamotorworks.com) • [generalmail@mamotorworks.com](mailto:generalmail@mamotorworks.com)

©Mid America Motorworks, Inc. All rights reserved.



## Description (cont.)

**STEP 3.** As you remove the carpet pieces, note which pieces lay over the top of other pieces.

**STEP 4.** When all carpet is all removed, be sure to scrape and vacuum the floor area, to remove all remnants of padding and carpet.

**STEP 5.** Most all pieces will need some minor trimming to fit. It is helpful, when reinstalling the new carpet pieces, to lay the original piece on top of the new one and rough trim it down to the size of the original piece.

**STEP 6.** It is best to do the rear section first, so as not to track up the front floor pieces.

**STEP 7.** Fit one of the wheel wells first, (unglued). Make sure you leave enough carpet down in the storage door well that the storage door trim frame will cover the carpet edge. Once you are sure you have a good fit, glue in place using our heavy duty spray glue, part 100-812. Hold the wheel well in place, and fold back the top half, spray glue on the padding and the floor pan, wait the required time stated on the can before sticking the pieces together. Press the carpet down. Lightly hold the top in place and lift up the bottom of the wheel well and glue down. Repeat procedure on other side.

**STEP 8.** Fit the riser piece, note how far off the floor the original was, as this will determine how the part that folds over the top will be trimmed. (Make sure you leave enough down in the storage door well so that the storage door trim frame will cover the carpet edge). The two flaps of the riser, to the right and left of the part that folds over, tuck into slits in the upper corners of the riser pan. This gives a finished look to the riser piece. Glue in place, but apply glue only down to the top of the cutout in the center of the riser carpet. This will allow you to pick up the riser flaps, as they lay on top of the front floor carpets.

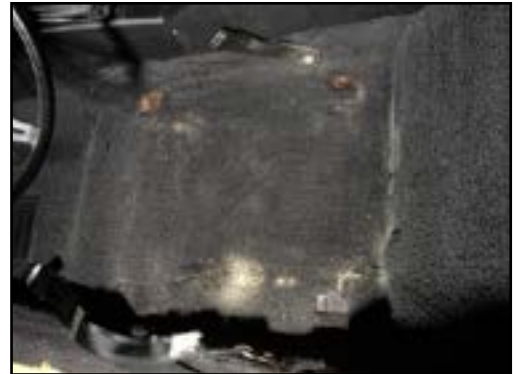
**STEP 9.** Rear deck mat: The two pieces of the foil backing for the deck mat will be separate from the deck mat carpet. Fit the pieces, foil side down, so that the "T" parts are up against the back wall. The ears should rest on top of the wheel well humps. Cut hole for cargo light, (68-76). Spray glue down to pan. If necessary, trim the foil so that it is not any closer than 1" from the edge of the storage door wells. Lay the deck mat carpet piece on the foil so that the "T" part of the mat is up the back wall, and the ears of the mat are resting on the top of the wheel well humps. Once it is fitted properly, cut the hole for the cargo area light. Replace the light bezel. Pull back the ears of the mat and glue in place. Trim the front edge of the mat so that the storage door trim frame will cover the carpet edge, then glue that part of the mat down.

**STEP 10.** Replace the storage door trim frame assembly. Be careful not to crack the trim frame when reinstalling.

**STEP 11.** Lay the front floor pieces in place and trim if necessary. Make sure you leave enough carpet going up the riser wall so that the riser flaps will lay over the top. Pull back and glue down the rear part, that would be under the seat, first. Pick up riser flaps, and lay over the top of the back edge of the floor piece. Sitting on that part of the carpet will hold it in place while you pull the front part back and glue it in place. Repeat steps with other front floor piece.

**STEP 12.** Replace plastic trim pieces and seats.

**Diagram on following page.**





**Description** (cont.)

**1971-1975 Rear Carpet Set Layout**

