



Application: 1984-1990

Part Includes

Splash Guards



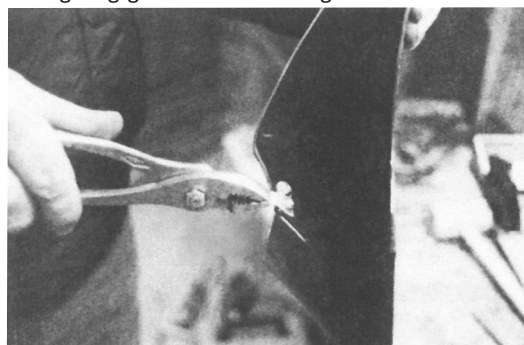
Tools Needed



Altec flares accent body lines and protect lower fenders from dirt and stone damage.

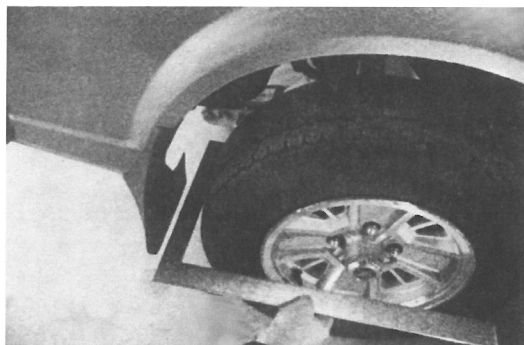
These general installation instructions apply to the model auto specified on the package label. See back for special notes on specific models.

Installation is simple however for best results have a helper assist in aligning guards and drilling holes.



STEP 1.

Install mounting tab on each flare using 3/8" phillips machine screws and kep nuts. Bend tab so it will lie flat on fender surface.



STEP 3.

Remove tire if necessary and fasten the guard where any existing wheel well holes line up with the flare holes using metal screws and clip nuts.



STEP 4.

Drill remaining wheel well and bottom fender holes using a 9/64" bit. Install remaining self tapping metal sheet screws.



Mamotorworks



@CorvettePassion



MidAmericaMotorworks

2900 North Third Street, Effingham, IL 62401

800.500.1500 • Worldwide: 217.540.4200 • FAX: 217.540.4800

www.mamotorworks.com • generalmail@mamotorworks.com

©Mid America Motorworks, Inc. All rights reserved.